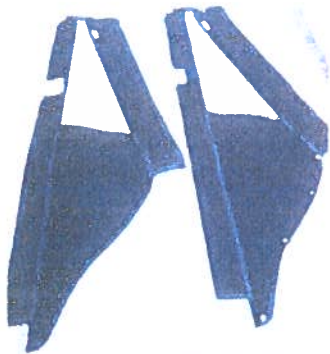




Yamaha Drive



- Velcro
- Extreme Seal
- Hardware



Front Sleeves



Back Sleeves



Back Panel

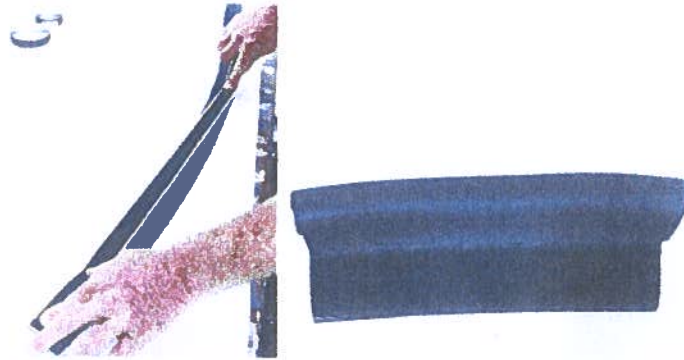


Door Skins

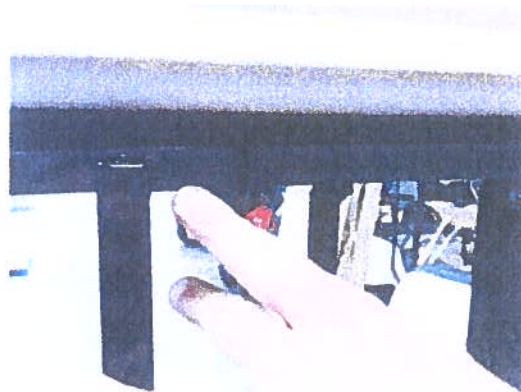
Yamaha Drive Enclosure Installation

Frames should be installed on car first and doors removed and laid flat on a table.

Adhere Velcro to Extreme Seal by rolling extreme seal out and lay flat on a table. The Velcro should be applied on the opposite side of the bead and at the opposite end of the bead. Then cut 2 5 1/4" pieces and set aside.



Adhere the 6 ft piece of Velcro around the top of the framework. Start from just behind the driver's side frame post

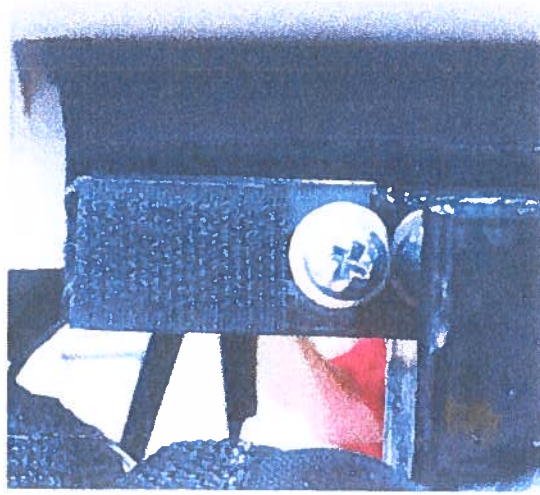


and adhere Velcro on the outside of the frame all the way around to the passenger side -- stopping just behind the passenger's side frame post. Trim Velcro if needed.

Then, take the 11 ft piece of Velcro and adhere all the way around the inside of the frame to the passenger side. Trim if needed.



Take a small piece of Velcro (approx. 1 inch) and apply to the top of the front frame post



From behind the door frame, apply the extreme seal with Velcro to the Velcro on the inside of the door frame. Start on the driver's side by attaching J of the 5 1/4" pieces at the front. Then apply the extreme seal all along the framework around the corner of the top to the back bracket. Cut and apply from back bracket to back bracket and cut again. Then start from the rear and apply forward to the passenger side front frame. Trim if needed and apply the second 5 1/4" piece to the front. All on the inside of the frame.

You are now ready to attach the enclosure.

Start with the driver's side sleeve and wrap around front strut. Zip all the way down and twist so that the zipper is on the back side of the post. Then attach the 2nd sleeve around the door frame and zip the top and bottom zippers all the way down. Attach top of 1st sleeve to small piece of Velcro.

Then repeat on passenger side.



From behind the door frame, apply the extreme seal with Velcro to the Velcro on the inside of the door frame. Start on the driver's side by attaching pieces at the front. Then apply the extreme seal all along the framework around the corner of the top to the back bracket. Cut and apply from back bracket to back bracket and cut again. Then start from the rear and apply forward to the passenger side front frame. Trim if needed and apply the second piece to the front. All on the inside of the frame

You are now ready to attach the enclosure.

Start with the driver's side sleeve and wrap around front strut. Zip all the way down and twist so that the zipper is on the back side of the post. Then attach the 2nd sleeve around the door frame and zip the top and bottom zippers all the way down. Attach top of 1st sleeve to small piece of Velcro.

Then repeat on passenger side.



Example photo on Yamaha Drive

Take back sleeves and attach to back frame post and zip down. Loosely Velcro at the top and repeat on passenger side.

Take the back panel and unvelcro the flap. Adhere one side of the Velcro at the top (just to help hold the panel in place). Then position the back properly so you can zip the side of the back panel to the side of the back sleeves. Once you have one side zipped together, adjust the Velcro along the top until you meet the other side and zip together. Tuck the bottom flap behind the sweater basket frame and pull through and Velcro to the other side.

